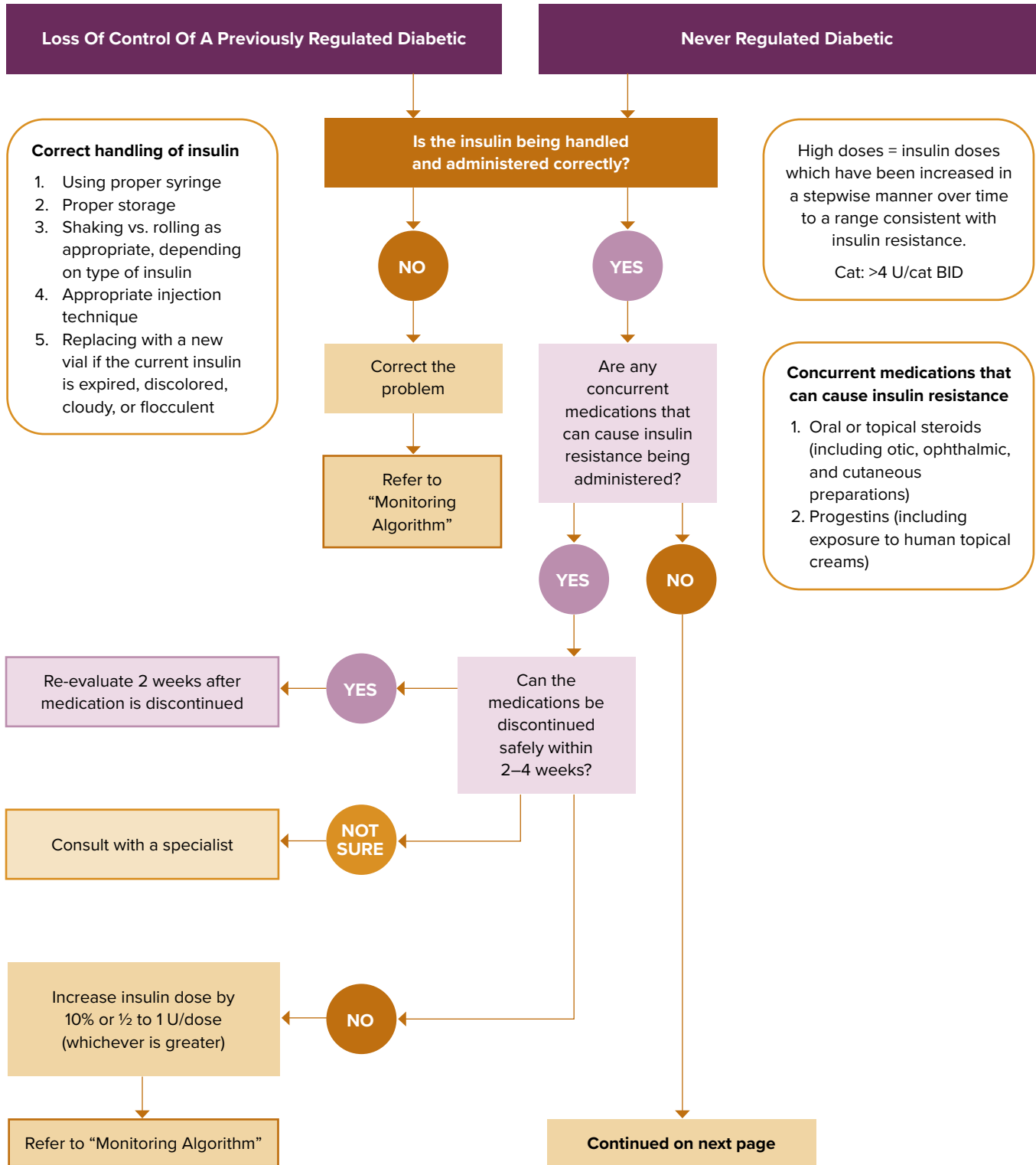


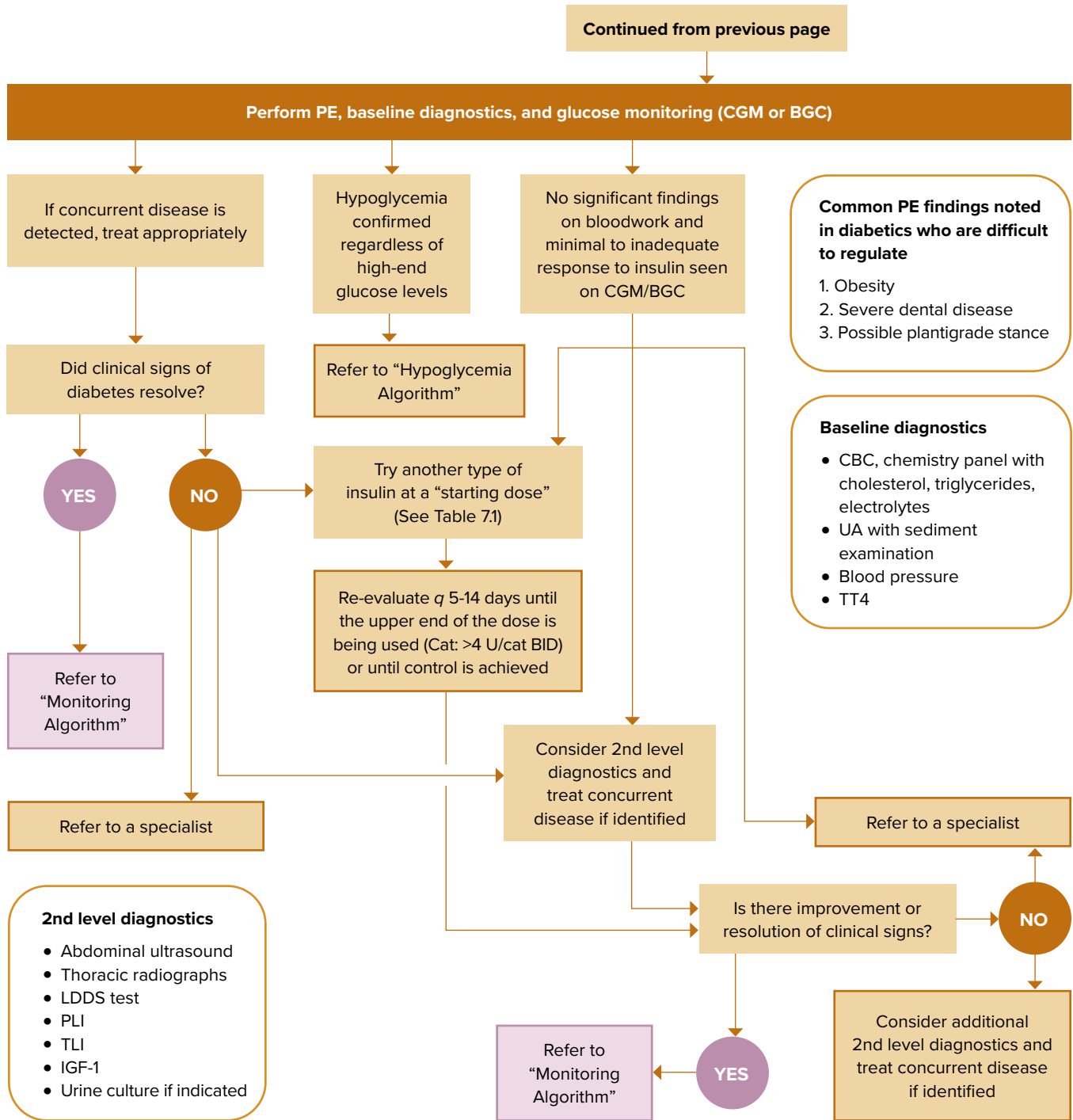
## TROUBLESHOOTING DIABETIC CATS RECEIVING HIGH DOSES OF INSULIN



**FIGURE 15.2**

*Troubleshooting Diabetic Cats Receiving High Doses of Insulin*

## TROUBLESHOOTING DIABETIC CATS RECEIVING HIGH DOSES OF INSULIN



**FIGURE 15.2, CONTINUED**

*Troubleshooting Diabetic Cats Receiving High Doses of Insulin*

BGC, blood glucose curve; CBC, complete blood count; CGM, continuous glucose monitor; PE, physical examination; U, unit; UA, urinalysis

**The 2026 AAHA Diabetes Management Guidelines for Cats are available at [aaha.org/diabetes-management-cats](http://aaha.org/diabetes-management-cats)**

These guidelines were prepared by a Task Force of experts convened by the American Animal Hospital Association (AAHA) and were subjected to a formal peer-review process. This document is intended as a guideline only, not an AAHA standard of care. These guidelines and recommendations should not be construed as dictating an exclusive protocol, course of treatment, or procedure. Variations in practice may be warranted based on the needs of the individual patient, resources, and limitations unique to each individual practice setting. ©2026 AAHA.

