

MONITORING GLUCOSE IN DIABETIC CATS ON INSULIN (Not on Basal Insulin)

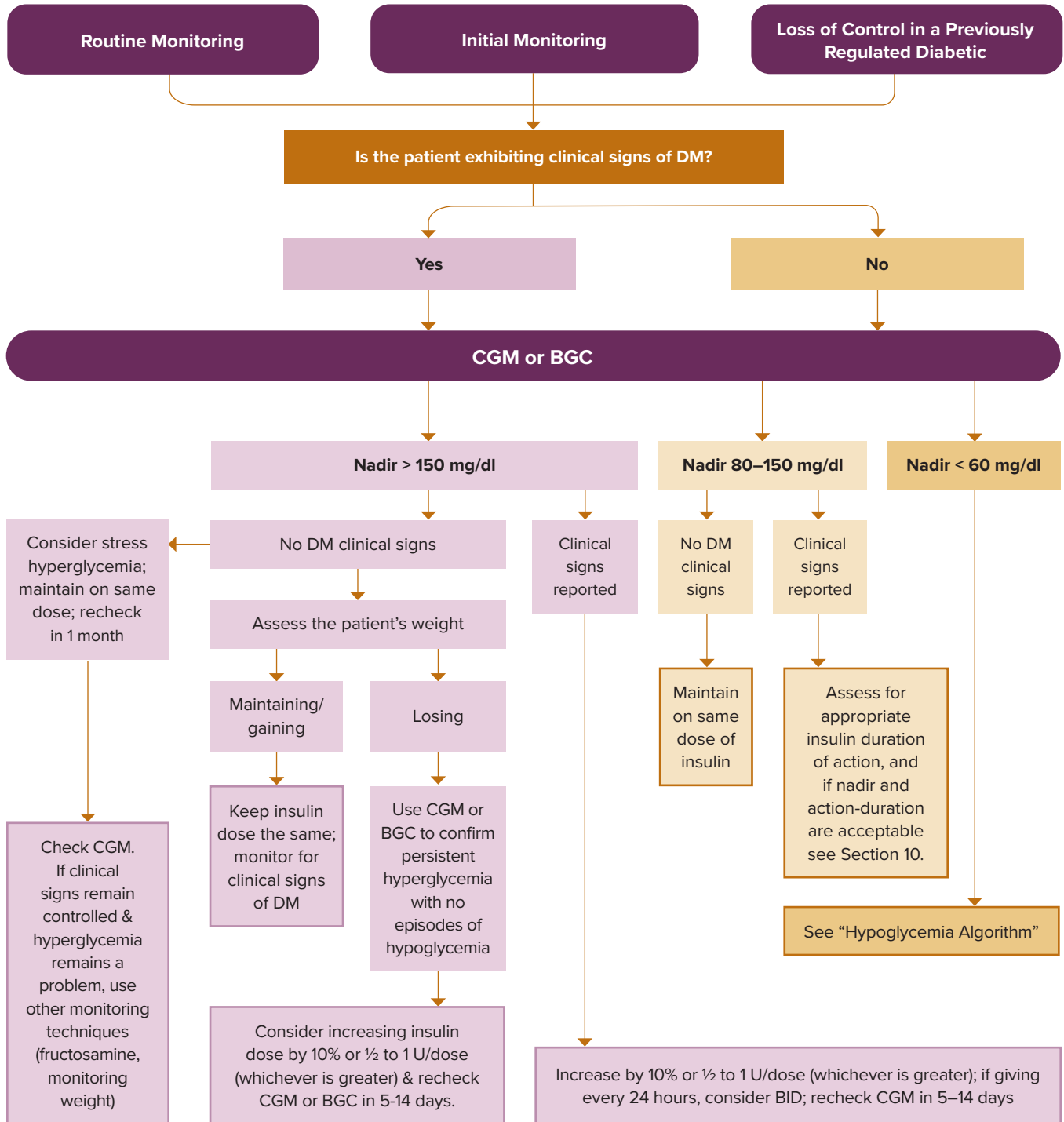


FIGURE 13.1

Monitoring Glucose in Diabetic Cats on Insulin (Not on Basal Insulin)

BID, twice daily; BGC, blood glucose curve; CGM, continuous glucose monitor; DM, diabetes mellitus; U, unit

The 2026 AAHA Diabetes Management Guidelines for Cats are available at aaha.org/diabetes-management-cats

These guidelines were prepared by a Task Force of experts convened by the American Animal Hospital Association (AAHA) and were subjected to a formal peer-review process. This document is intended as a guideline only, not an AAHA standard of care. These guidelines and recommendations should not be construed as dictating an exclusive protocol, course of treatment, or procedure. Variations in practice may be warranted based on the needs of the individual patient, resources, and limitations unique to each individual practice setting. ©2026 AAHA.

